



Instruction Manual

and Safety Instructions Korth Revolver, cal .357 Magnum

Read it carefully before using!

**PTW KORTH Technologies GmbH
Justus-Kilian-Strasse 3
D-35457 LOLLAR
Germany
Phone 0049 6406 830020
FAX 0049 6406 8300299
Email: sales@kortharms.com
www.kortharms.com**

Table of Contents

1.	About this manual	3
2.	Used guns	3
3.	Store firearms safely in the home	3
4.	SAFETY RULES	4
5.	Description of the parts.....	9
6.	Care of the Revolver	9
7.	Repair	9
8.	Loading the Revolver	10
9.	Remove the Cylinder with Crane.....	12
10.	Double Action Shooting.....	13
11.	Single Action Shooting.....	13
12.	Adjust the Hammer Main Spring.....	14
13.	Adjust the trigger rewind spring.....	15
14.	Rear Sight adjustment Standard and Super Sport:.....	15
15.	Disassembling the Crane Cylinder- Craneunit for cleaning.	18
16.	Exploded view and spare parts list.....	21

1. About this manual

This is an instruction manual for safe handling and operation of the Korth PRS Revolver model Sky Marshal. It does not provide instructions for using a revolver for self-defence, hunting, or target shooting. It is important to obtain professional instruction prior to engaging in any of these activities. The National Rifle Association, your local or state authorities, or your gun dealer may be able to provide information regarding the available instructors and training courses. If you have a license to carry concealed, never do so without prior instruction from a certified instructor. Using a gun for self-defence is a complex subject involving dangers and risks for which you must be properly trained. Every safety rule has a reason behind it. Read the rules carefully and understand why each one is important for safety. We recommend obtaining professional training and instructions prior to handling this or any other firearm. Know and obey all gun laws. Never give a firearm to anyone who is not allowed to possess a firearm or anyone who may use it for a criminal purpose.

2. Used guns

If you purchased this firearm used, please have it inspected and tested by a competent gunsmith prior to shooting it. Firearms are sometimes altered and may require repair before they can be used safely.

3. Store firearms safely in the home

Store all firearms unloaded and locked in a secure place. Obey all firearm storage laws. Store firearms and ammunition separately. Teach your children never to handle firearms without adult supervision..



WARNING

KNOW YOUR GUN

4. SAFETY RULES

READ AND UNDERSTAND THESE SAFETY RULES

Be A Safe Shooter.

An accident is an unintended, unplanned, and unexpected event or circumstance that may involve undesirable or unfortunate outcome, especially one resulting in injury, damage, harm, or loss. Many accidents might have been avoided or prevented, had the circumstances leading up to them been recognized, and acted upon, prior to their occurrence.

Don't be the cause of an accident.

A responsible gun owner is always safety minded and handles firearms in a safe manner by following the basic rules of safe shooting and by using common sense in their handling. Store firearms unloaded, locked, and in a secure place. Secure keys separate from locks and away from children. Keep firearms out of reach of children. You are responsible for children's safety.

- Always keep the muzzle pointed in a safe direction.
- Never point a firearm at any person or thing you do not intend to shoot.
- **Do not drop your firearm.** If it falls, it may fire even with the safety on. If you do drop it, unload it and examine it to be sure it works correctly. Do not attempt to fire it again until you have completed this safety check.
- Never put your hand over the muzzle of the firearm.
- Keep your fingers off the trigger and out of the trigger guard until you are aiming at your target, ready to shoot.

TREAT EVERY GUN AS IF IT WERE LOADED, ALL THE TIME!

BE A RESPONSIBLE GUN OWNER!

- Never rely on a gun's "safety" to protect you from unsafe gun handling. A safety is only a mechanical device, not a substitute for common sense.
- When the gun is loaded and cocked, always keep the thumb safety on until you are ready to fire.
- Be sure of your target and backstop before you shoot. Ask yourself what your bullet will hit if it misses or goes through the target.
- Before shooting, be sure the barrel is clear of obstructions, including excessive oil and grease.
- If anything does obstruct the barrel, unload the pistol, and clear the bore immediately, before attempting to shoot. Obstructed barrels can burst and injure you or bystanders.

- Never let water, snow, mud, or other contaminants enter the barrel.
- Never pull a gun toward yourself by the muzzle.
- Do not climb a tree, cross a fence or a ditch, or jump over an object with a loaded gun.
- Always hold your gun so as to control the direction of its muzzle in case you fall or stumble.
-



WARNING
BE A SAFE SHOOTER!

KORTH Pistols are classified as firearms and dangerous weapons. Injury or death to you or others may result from unsafe or improper use.

- Guns and alcohol or drugs do not mix. Do not take them before or during shooting activities. Your vision, coordination, and judgment could be impaired, making gun handling unsafe.
- When taking medication, seek a doctor's advice to be sure that you can handle and operate your firearm safely.
- Get instructions from a competent firearms instructor before using any firearm.
- Before attempting to shoot, practice operation by dry firing with the chamber empty, or loaded with dummy shells. Become familiar with the safety features, trigger control, and handling of the firearm.
- Always keep and carry your pistol with an empty chamber and with the hammer forward until you intend to shoot, so that your pistol cannot be fired unintentionally.
- Firearms should be unloaded when not in use. This requires emptying both the chamber and the magazine .
- When handing a firearm to someone else, always ask its recipient to open the action and check that it is unloaded.
- Never take anyone's word that a firearm is unloaded. When receiving a firearm, always open the action and check that it is unloaded.

READ THESE RULES!

- Always load shells from the magazine and keep your finger off the trigger.
- Load gun only when on range preparing to fire. Unload it before leaving range.
- Treat every gun as if it is loaded...**all the time!**
- Load and unload with the gun pointed in a safe direction.
- Be certain gun is unloaded before cleaning.
- Completely unload your gun before storing, travelling, standing it against an object, laying it down, entering a house, car, truck, boat, RV/camper, building, or handing it to someone.

- Never leave a loaded gun unattended.
- Tragedy may result if a child finds your gun and plays with it. Keep every gun secure. Children do not believe guns can kill.
- Store guns and ammunition separately. Both should be placed beyond children's reach.
- Obey all laws regarding the storage and security of guns in the home.
- Know and obey the laws regarding the transportation and carrying of firearms.
- Never carry any handgun in your pocket, purse or tucked in your belt or waistband. Use a pistol case or a proper holster with safety flap or strap.
- New non-defective brass is essential to ensure safe functioning of your gun.
- Old or reloaded ammunition may be dangerous. Use only clean, dry original, high-quality, commercially manufactured ammunition (**pay attention to page 9**). Reloaded ammunition will void the warranty.

TREAT EVERY GUN AS IF IT WERE LOADED, ALL THE TIME!

- Many ammunition calibers look alike. Make sure you use the right ammunition in your firearm.
- If your firearm fails to fire when the trigger is pulled, keep it pointed at the target for at least 30 seconds before opening the action and removing the cartridge from the chamber. Sometimes slow primer ignition will cause a “hang fire”, and the cartridge will go off after a short pause.
- When shooting with others, always appoint someone to maintain safety. Obey his or her commands immediately and completely.
- While a shooter is loading, firing, and unloading, the spectators should be at least 10 feet behind him or her.
- Always wear protective glasses when shooting.
- Always wear hearing protection when shooting.
- Never shoot at hard flat surfaces or water, as bullets may ricochet.
- Do not alter or modify your gun.
- Have your gun serviced regularly by a qualified gunsmith.
- Discharging firearms, cleaning firearms, or handling ammunition in poorly ventilated areas may result in exposure to lead and other substances known to cause birth defects, reproductive harm, cancer, and other serious physical injury. Ensure adequate ventilation at all times. Wash hands thoroughly after exposure.



**Always wear eye and ear protection when using any firearm.
Safety and instruction manuals are available from Nighthawk
Custom LLC**

BE A SAFE SHOOTER!

- Do not try to modify your gun's trigger pull, because alterations of trigger pull usually affect sear engagement and might cause accidental firing.
- Never disassemble the safety. It has been correctly designed, fitted and tested. Any mechanical device can fail, so never rely on the safety as an alternative to safe handling.
- Never use a gun that jams or fails to function properly. Should this occur, return it to the manufacturer for warranty/repair.
- If your shot sounds weak or underpowered, it could mean that a bullet is stuck in the chamber or the bore. Unload the firearm immediately and check the chamber and the bore for obstructions before attempting to fire it.
- Do not “horseplay” with a gun. Your gun cannot think... but you can. Firearm safety depends on the operator and is his responsibility.

Please contact us with any questions and/or matters that might relate to your safety and the safe operations of any of our products.

PTW KORTH Technologies GmbH

Justus-Kilian-Strasse 3

D-35457 LOLLAR

Germany

0049 6406 830020

Email: sales@kortharms.com

www.kortharms.com

CAUTION!

There is no safe way to discharge a pistol in a home or apartment. Bullets will go through walls, floors, furniture, and appliances and still cause serious injury or death to persons in the house, next door, or outside. Accidental discharges indoors always result in property damage or personal injury.

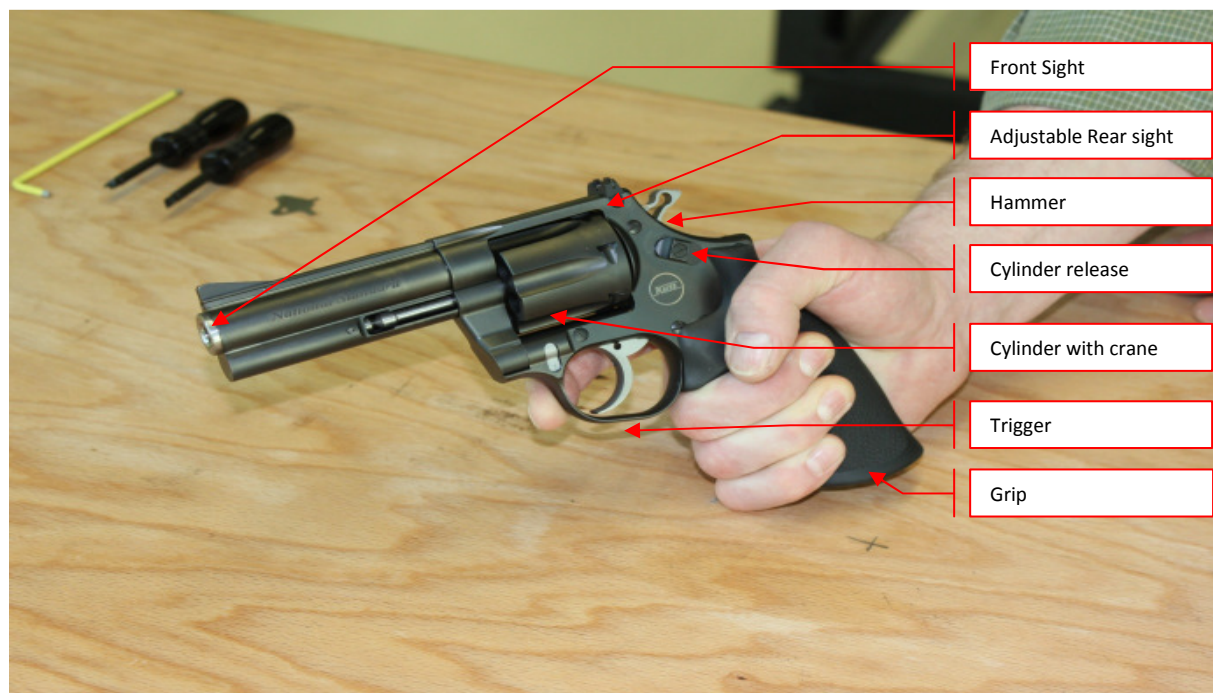


WARNING: When you squeeze the trigger, you must expect the gun to fire. You must take full responsibility for firing it. Your care can avoid accidental discharge and thereby prevent accidental injury and death.

Attention

For your own safety, please read this manual carefully before using the Revolver.

5. Description of the parts



6. Care of the Revolver

The service life and performance of your Revolver depend on its proper use and correct regular cleaning. Please clean after every shooting session the barrel, the action face, the chamber and the ratchet. Please note that the cleaning from the crane and the cylinder is necessarily after approx. 500 rounds. Take care to use a proper gun oil for cleaning.

7. Repair

Do not attempt to repair this Revolver if it needs service. Incorrect assembly could lead to dangerous malfunctions. Repairs should be made by authorized gunsmith

Technical Data:

- System: Revolver National Standard
- Trigger: Double Action/Single Action
- Caliber: .357 Magnum
- Length: from 7,87 Inch to 11 Inches
- Wide: 1,54 Inch
- Height: 6,1 Inch
- Barrel length: from 3 Inch to 6 Inch
- Weight: from 992g to 1208 g
- Cylinder capacity: 6 Rounds

8. Loading the Revolver

Load only Cartridges in the Caliber: **.357 Magnum or .38 special**



- Push the cylinder release forward



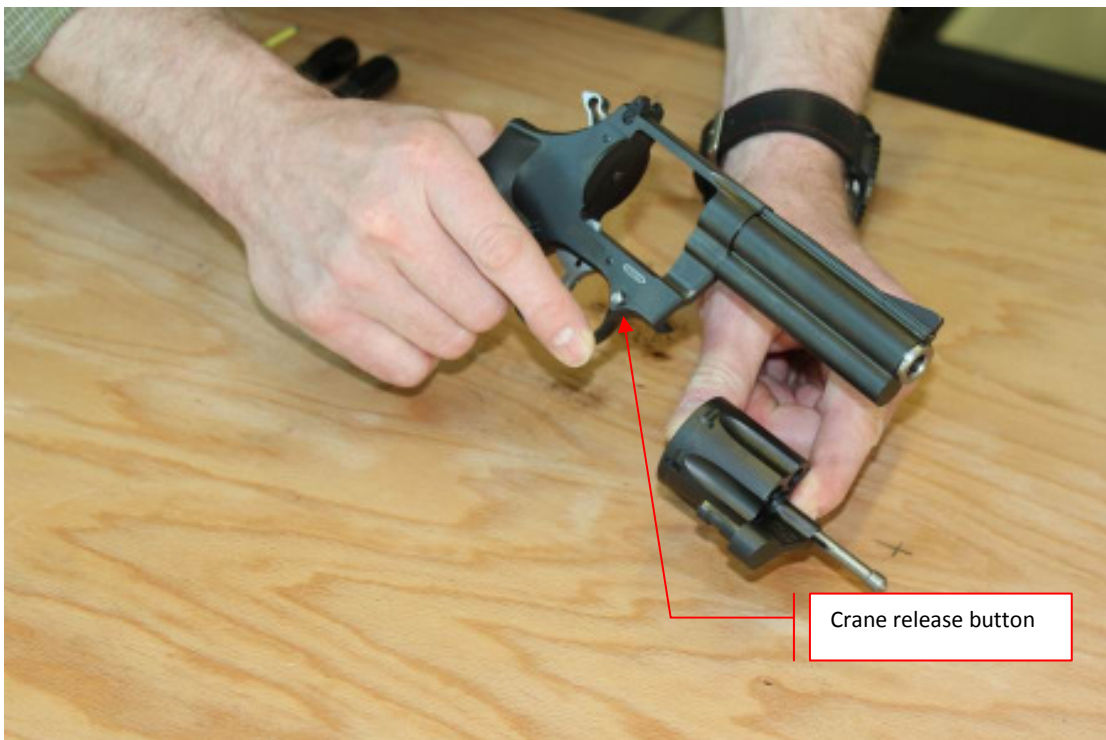
- Swing out the cylinder
Load the cartridges and close the cylinder

This Revolver work with all Speedloader models for L-Size Frame!

9. Remove the Cylinder with Crane



- Remove the cylinder push the button on the right side of the frame.



10. Double Action Shooting



- Pulling the trigger cocks the hammer and the shot is fired.

11. Single Action Shooting



- First the hammer is pre-cocked.
- The shot is fired by pulling the trigger.

12. Adjust the Hammer Main Spring



Remove the grip first, after that you can setup the hammermaine spring with an hexagonal tool. Turn it clockwise to make it stronger/ counter clockwise to make it smoother!

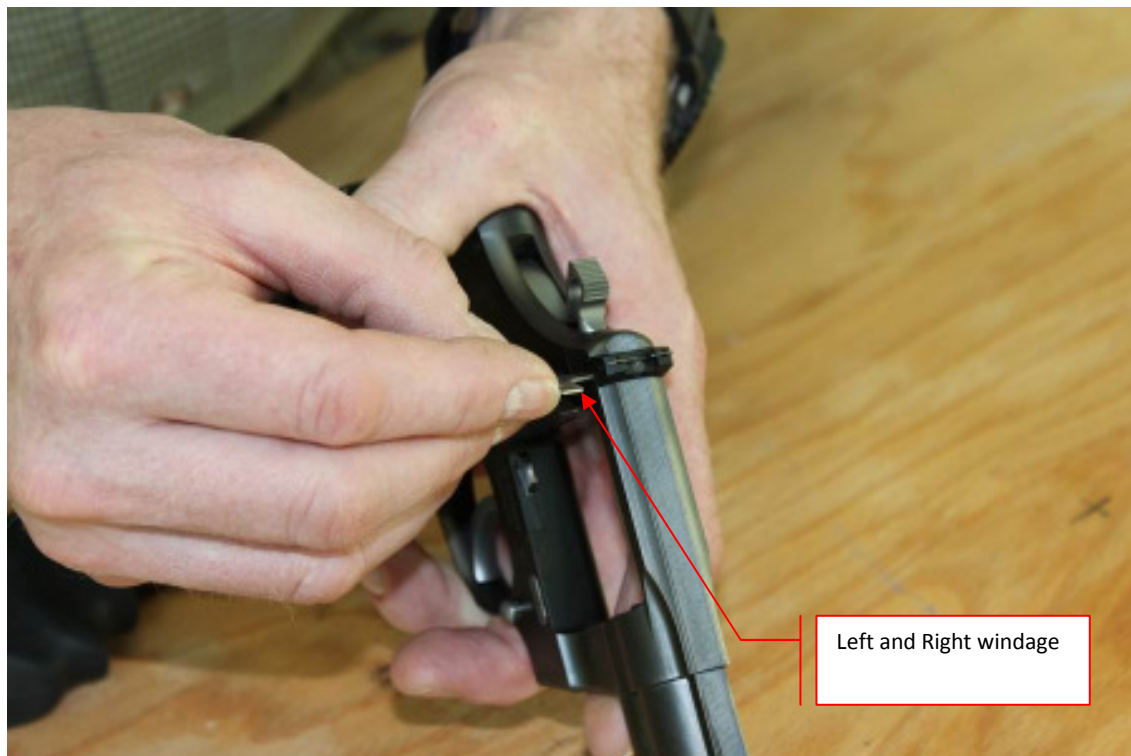


13. Adjust the trigger rewind spring

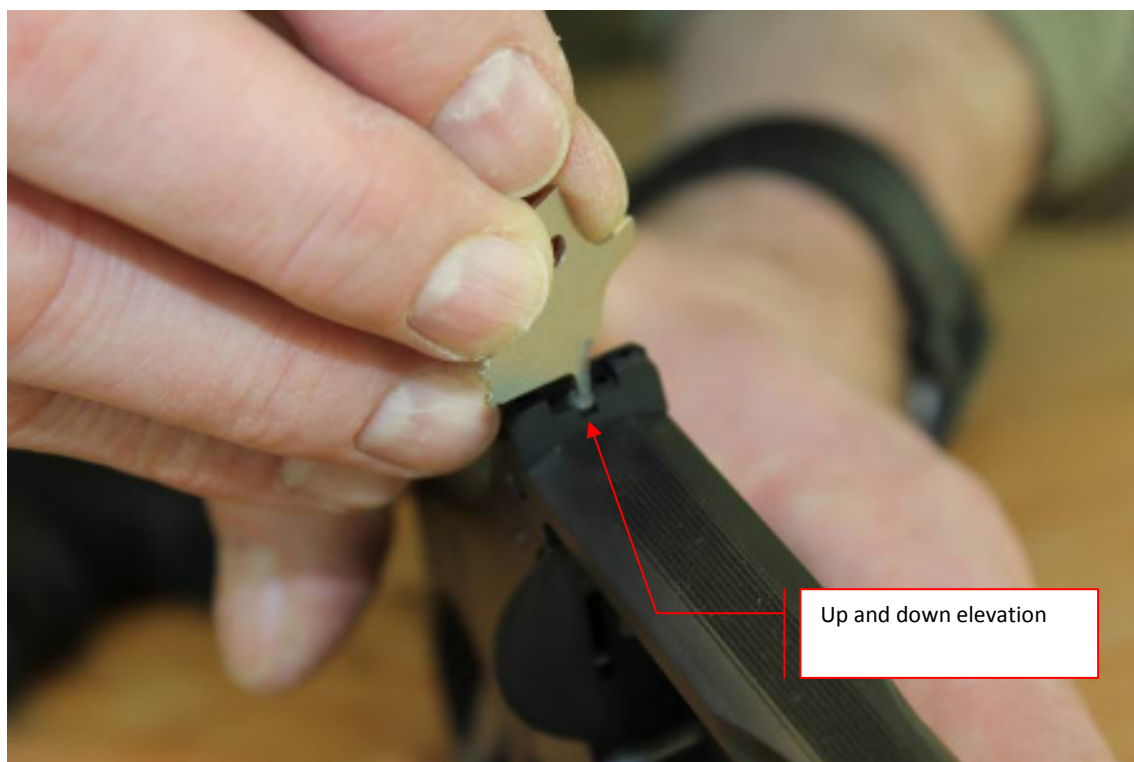


To adjust the trigger rewind spring you have to loose (turn to the right side) the screw on the left side and adjust it with the screw on the right side counter clock wise.

14. Rear Sight adjustment Standard and Super Sport:



To adjust Left and Right windage use the small screwdriver



To adjust the elevation up and down use the smallest screwdriver

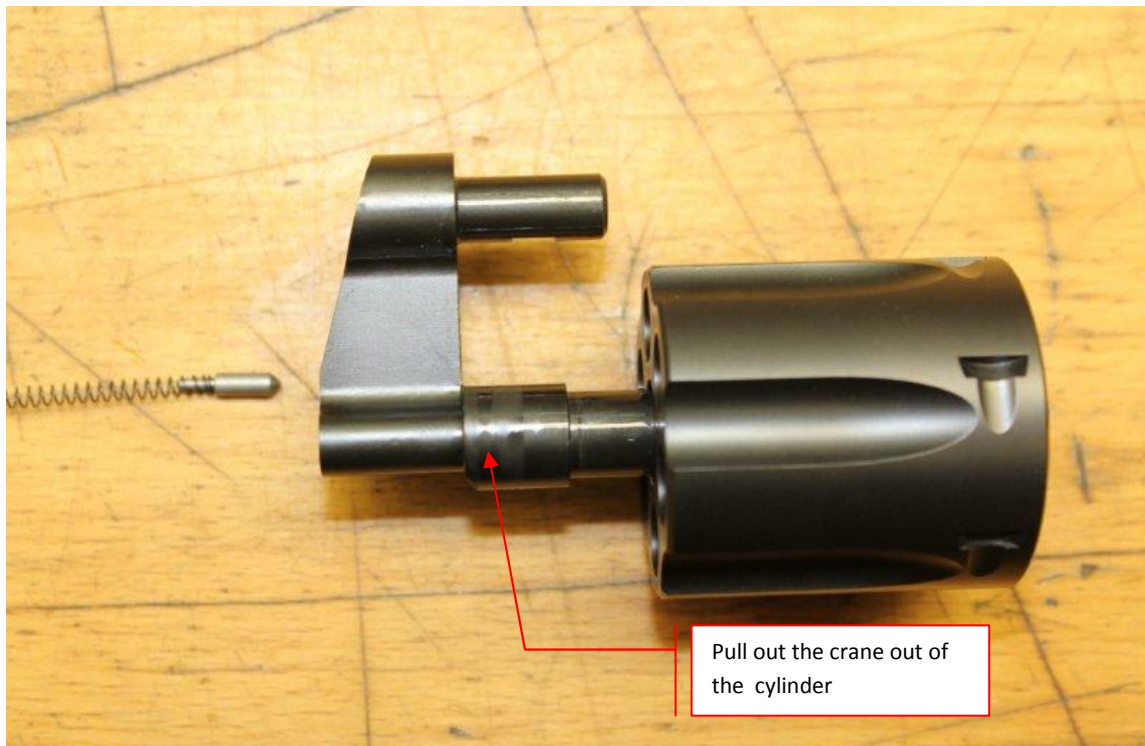
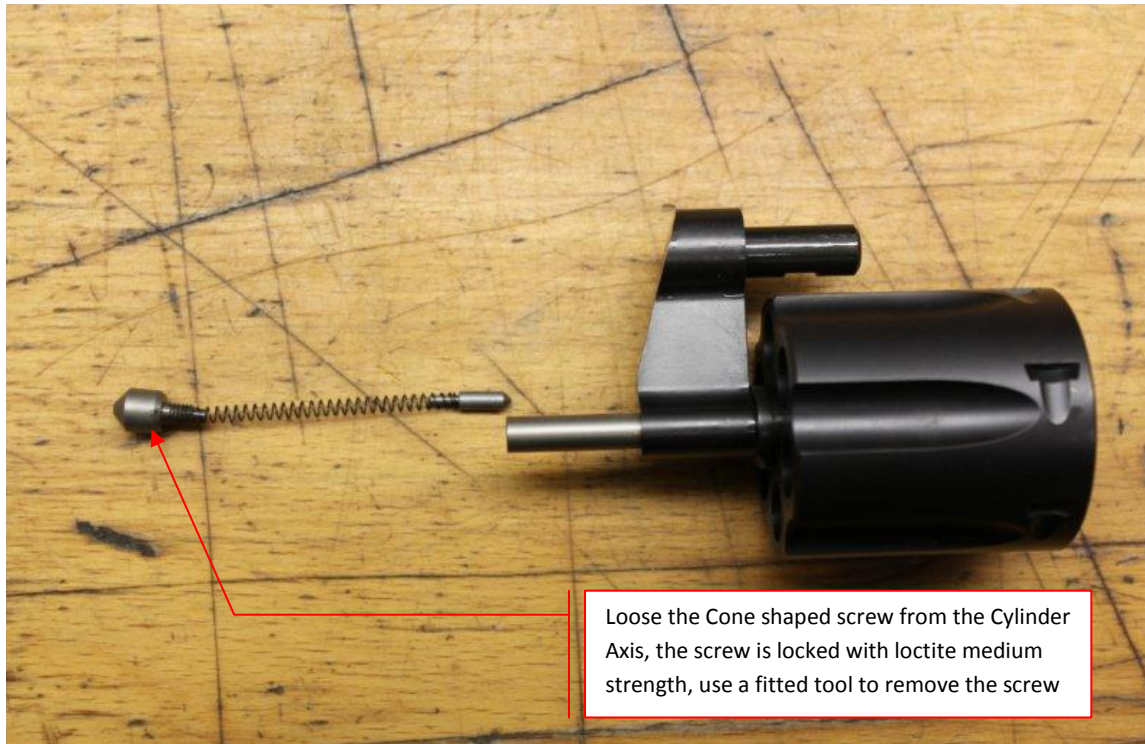


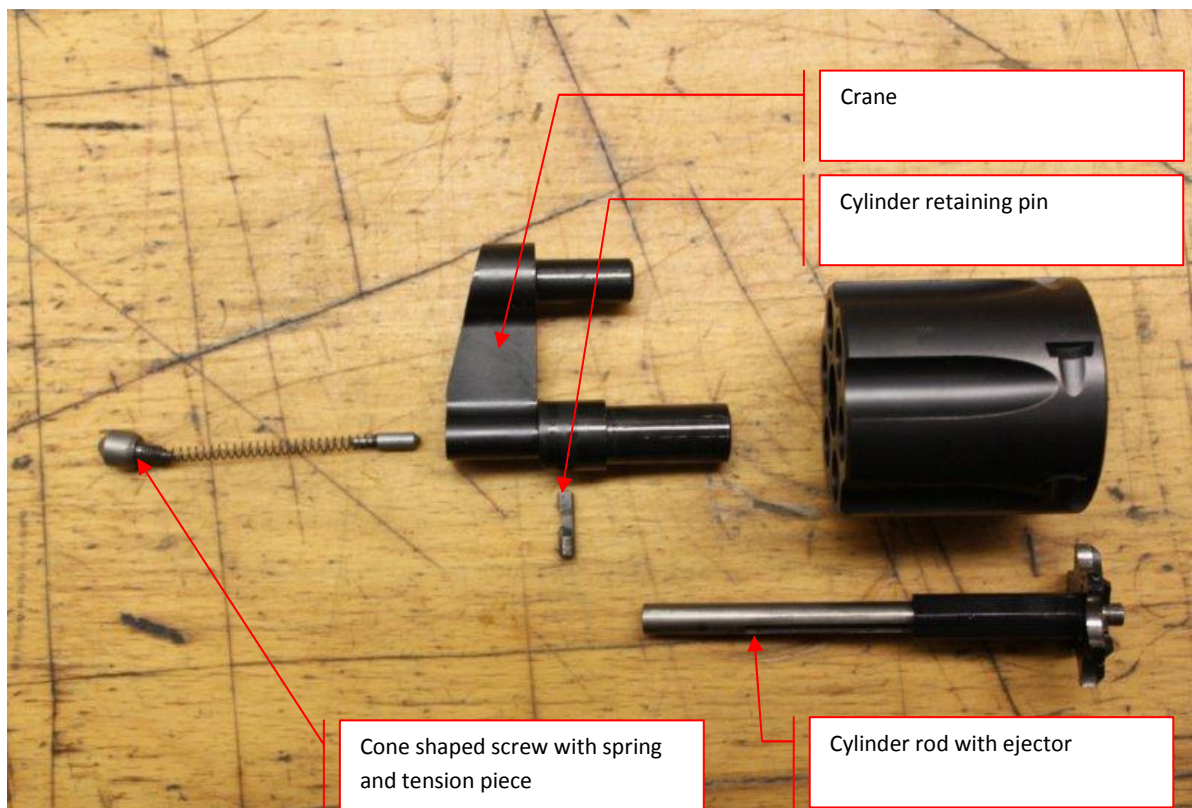
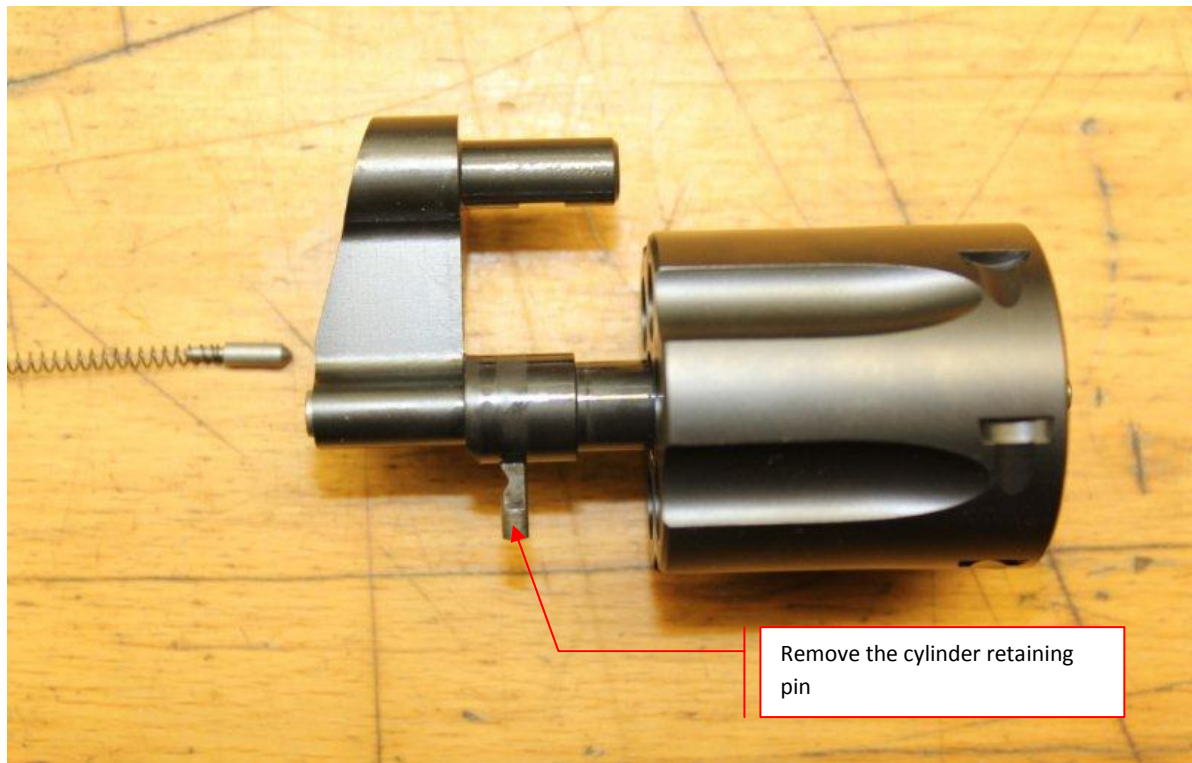
The Super Sport model has two options at the rear sight: Adjustable Sight plates for the light gap and left and right windage screw.



Four distances Front Sight:

15. Disassembling the Crane Cylinder- Craneunit for cleaning.



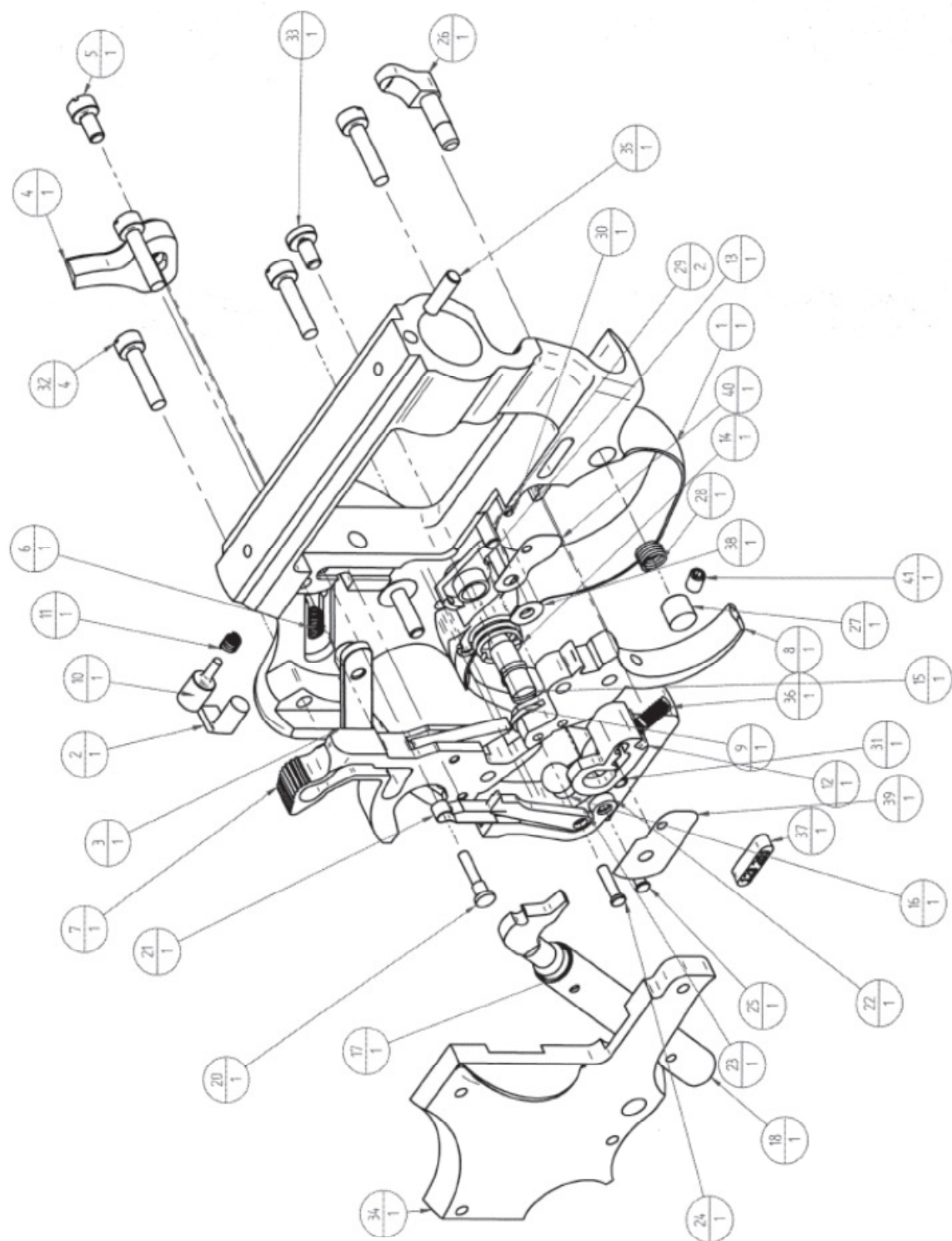


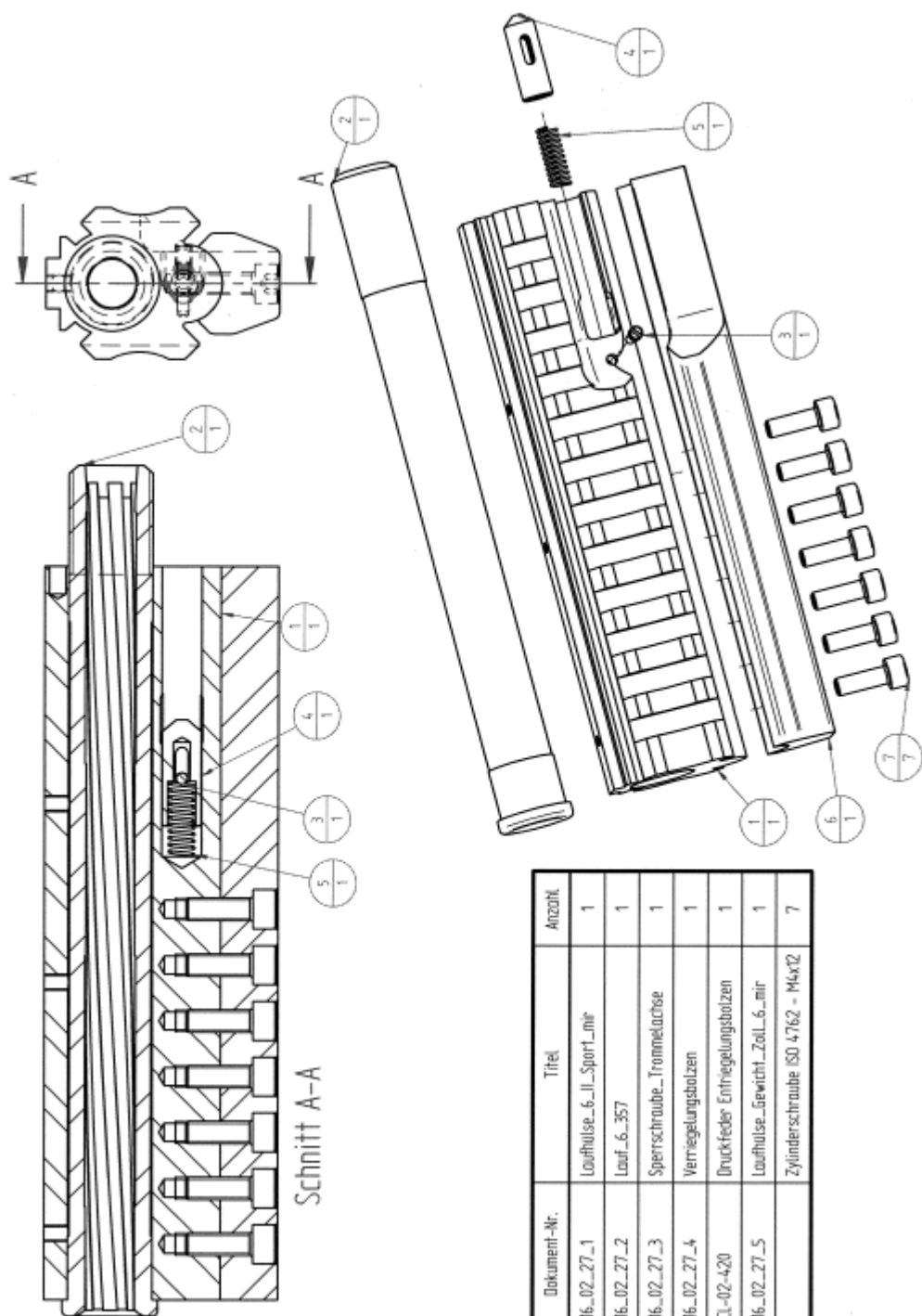
Triggerwheels



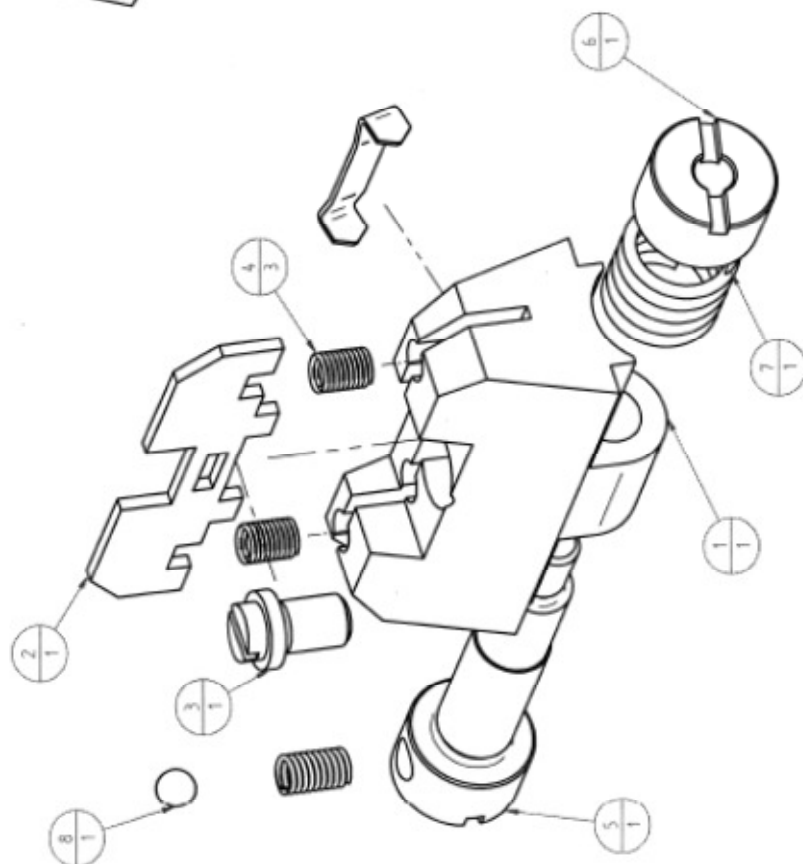
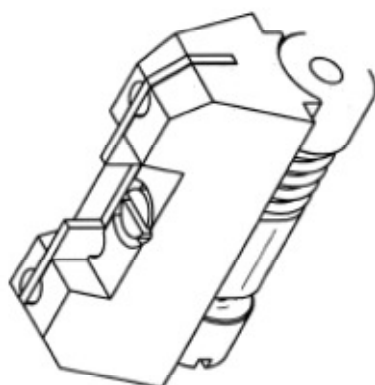
The Revolver is fitted out of the box with the trigger wheel number 5. The other two wheels are for the personal adjustment from the double action trigger, please be advised that a trained gun smith should assist you to change the wheels.

16.Exploded view and spare parts list

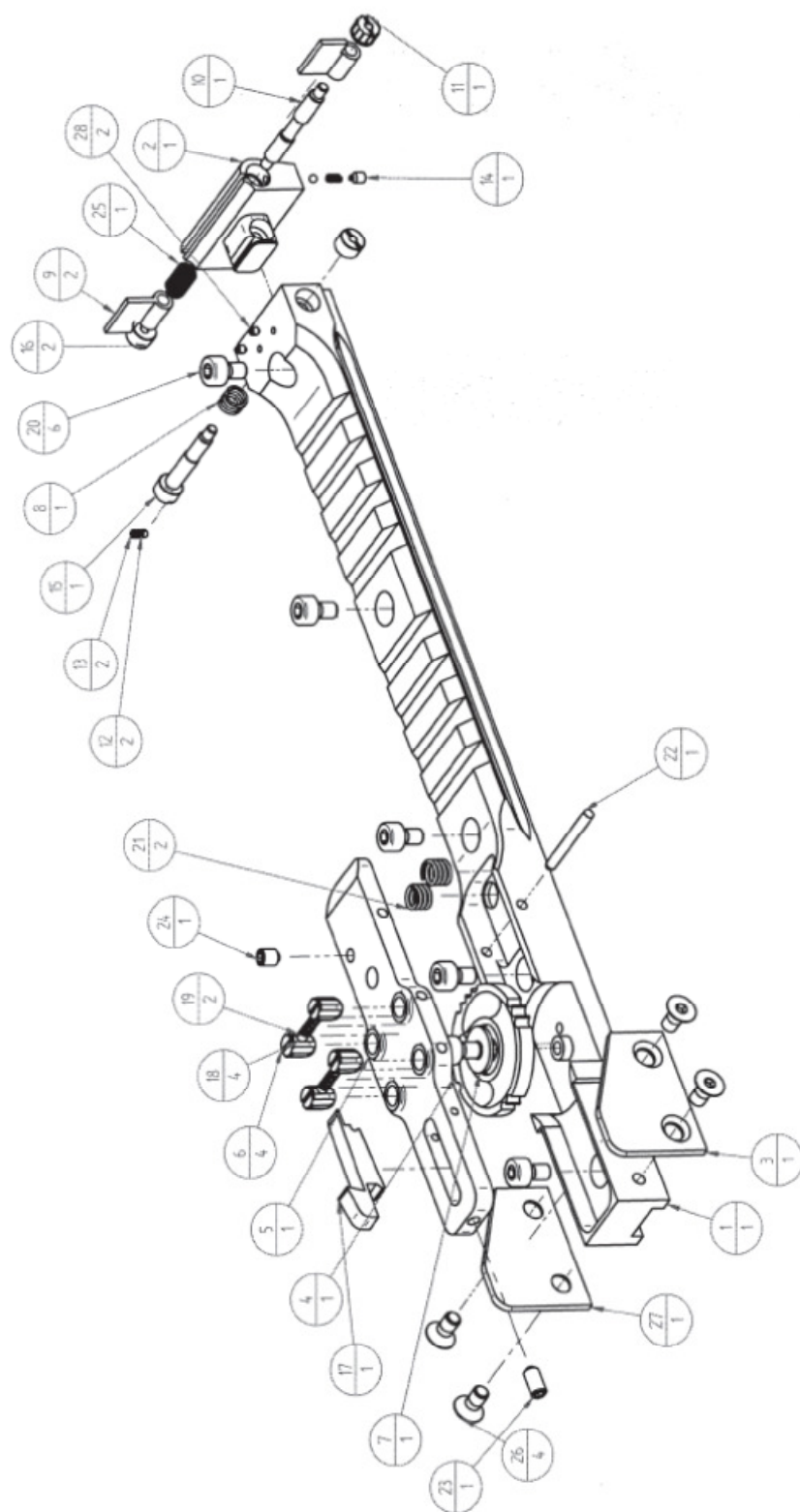




Pos.-Nr.	Dokument-Nr.	Titel	Anzahl
1	16_02_27_1	Laufhülse_6_11_Sport_mir	1
2	16_02_27_2	Lauf_6_357	1
3	16_02_27_3	Sperrschraube_Trommelachse	1
4	16_02_27_4	Verriegelungsbolzen	1
5	11-02-420	Druckfeder Entriegelungsbolzen	1
6	16_02_27_5	Laufhülse_5erwicht_Zoll_6_mir	1
7		Zylinderschraube ISO 4762 - M4x12	7



Pos.-Nr.	Dokument-Nr.	Titel	Anzahl
1	10-2-4051	Visier_Kimmenblatt_Träger	1
2	15_02_01	Einsteckblatt	1
3	15_10_12	Visier_Schraube_Hohe	1
4	CL-14-710	Visier Druckfeder Kimmenblatt/Rear Sight ball spring	3
5	10-2-4052	Visier_Seitenverstellerschraube_MS/Rear Sight windage screw	1
6	10-2-4053	Visier_Klemmhülse/Rear Sight windage Nut	1
7	10-2-xxxx	Visier_Feder_Kimme/Rear Sight Side Spring 50/3/1	1
8	CL-14-310	Visier Rastkugel/Rear Sight ball	1
107	16_02_15	Visier Druckblech	1



Pos.-Nr.	Dokument-Nr.	Titel	Anzahl	Pos.-Nr.	Dokument-Nr.	Titel	Anzahl
1	15-12-25-3	Rahmen_L_3_SS_mir	1	23	10-2-4035	Transporteur_mir	1
2	10-2-4029	Entriegelung_Druckstück	1	24	10-2-4043	Transporteur_Stift	1
3	10-2-4024	Entriegelung_Schieber	1	25	10-2-4044	Schlagstück_Sperre_Stift	1
4	15-12-25-4	Entriegelung_Knopf_Sport_mir	1	26	15_12_03_3	Kran_Arretierung	1
5	10-2-4027	Entriegelung_Schraube	1	27	11-08-110	Befestigungsmutter KAS	1
6	10-2-3008	Trommel_Entriegelung_Feder	1	28	11-08-100	Druckfeder KAS	1
7	16-02-29_1	Schlagstück Gruppe	1	29		ISO 2338 3m6 x 14	2
8	10-2-4030	Abzug_Standard_mir	1	30		ISO 2338 2m6 x 14	1
9	11-09-200	Druckpunkttrad	1	31	10-2-4050	ISO 2338 3m6 x 16	1
10	10-2-4041	Schlagbolzen ZF	1	32	10-2-4048	Rahmen_L_Deckplattenschraube	4
11	11-12-100	Schlagbolzenrückholfeder	1	33	10-2-4049	Federspannbolzen Klemmschraube	1
12	15_12_03_4	Trommel_Arretierung_mir_10_2_4031	1	34	15_12_03_2	Deckplatte_mir_NS	1
13	10-2-4039	Abzugsfederklinke_mir	1	35	15_12_03_8	Fixierstift_Laughülse_Rahmen	1
14	MST-09-530-RH	Abzugsrückholfeder_MST_mir	1	36	10-2-3008	Feder Trommel Arretierung	1
15	10-2-4038	Federspannbolzen_MST	1	37	10-2-4072	Seriennummer_DIN 6885 A3 x 3 x 12	1
16	11-10-002	Stellschraube Federdruck	1	38	15_12_03_5	Distanzblech_S	1
17	10-2-4000	Schlagfederführungsstange MST	1	39	15_12_03_6	Distanzblech_L	1
18	11-10-001	Schlagfederführungshülse	1	40	15_12_03_7	Distanzblech_R	1
19	11-10-400	Schlagfeder	1	41		Gewindestift ISO 4027 - M3x5	1
20	11-09-330	Umsatzhebel Halttestift	1				
21	11-09-320	Schenkelfeder Umsatzehebel	1				
22	10-2-4034	Schlagstück_Sperre_mir	1				

Pos.-Nr.	Dokument-Nr.	Titel	Anzahl	Pos.-Nr.	Dokument-Nr.	Titel	Anzahl
1	15-12-24-1	Visierschiene SS	1	16	10-2-4053	Visier_Klemmhülse/Rear Sight windage Nut	2
2	15-12-24-2	Visierschiene_Kimmenträger	1	17	10-2-4061	Korn_Sport_Fest_6.0	1
3	15-12-24-3	Visierschiene_Wange_F	1	18	CL-14-310	Visier Rastkugel Dm2 mm	4
4	15-12-24-4	Visierschiene_Scheibe	1	19	10-2-4026	Visierschiene_Feder_Rastkugel	2
5	15-12-24-5	Visierschiene_Kornträger	1	20		Zylinderschraube DIN 912 - M3x5	6
6	15-12-24-6	Visierschiene_Stellschraube_Höhe	4	21	10-2-3008	Visier_Druckfeder_Sport 52/2/1	2
7	15-12-24-7	Visierschiene_UScheibe	1	22		Zylindersstift ISO 8734 - A - 2 x 18	1
8	15-12-24-8	Visier_Feder_Kimme 50/3/1	1	23		Gewindestift DIN 916 - M3x6	1
9	15-12-24-9	Visier_Kimmenblatt_Verstellbar	2	24		Gewindestift DIN 916 - M3x4	1
10	15-12-25-1	Visier_Kimmenblatt_Verstellerschraube_1	1	25	10-2-4026	Visierschiene_Feder_Kimmenblatt	1
11	10-2-4053	Visier_Klemmhülse_Rast	1	26		Senkschraube DIN 7991 - M3x6	4
12	CL-14-310	Visier Rastkugel/Rear Sight ball	2	27	15-12-25-2	Visierschiene_Wange_F_mir	1
13	CL-14-710	Visier Druckfeder Kimmenblatt/Rear Sight ball spring	2	28		Gewindestift ISO 7434 - M16x2	2
14		Gewindestift ISO 4028 - M2x3	1				
15	10-2-4052	Visierschiene_Seitenverstellerschraube	1				



Quality made in Germany

PTW KORTH Technologies GmbH

Justus-Kilian-Strasse 3

D-35457 LOLLAR

Germany

Phone: 0049 6406 830020

FAX: 0049 6406 83002999

Email: sales@kortharms.com

www.kortharms.com